

TREASURE VALLEY PAINT HORSE CLUB



August 2009
Volume 1, Issue 1

Inside this Issue

Upcoming Stallion Futurity Auction
Horse Show

Treasure Valley Paint Horse Club
ISHSA Fall Show

Club Membership

Club Officers and Board Members

Horses for Sale

Treasure Valley Paint Horse Club
8831 Hanley Place
Eagle, ID 83616
Whatshappeningranch3@msn.com

APHA Horse Show & Stallion Service Auction Futurity September 5, 2009

TVPHC is proud to present **2009 Autumn Classic**. This is an APHA and Pinto Approved Horse Show and Stallion Auction Futurities.

The show will be held September 5, 2008 at Birts Arena, Hestehaven Lane, in Nampa, Idaho. The judges will be Kathy Miller and Gary Miller from Belton, MO.

The fees for **Open/SPH/BS** are \$10.00 per class per judge plus \$4.00 APHA fee per horse or \$100 day fee plus APHA fees.

Fees for **Novice/Amateur** are \$8.00 per class per judge plus \$4.00 APHA fee per horse or \$80.00 day fee plus APHA fees.

All **Youth class** fees are \$6.00 per class per judge plus \$4.00 APHA fee per horse or \$60 day fee plus APHA fees.

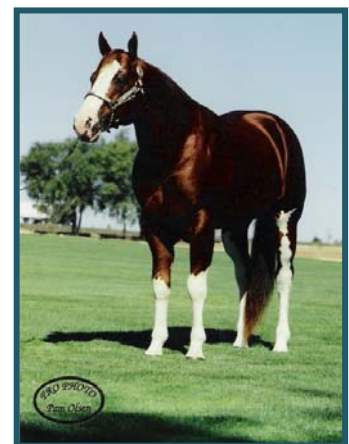
Entries into the futurities will officially close on September 1, 2009.

There will be buckles awarded to the High Point Paint and High Point Pinto.

Please see the enclosed show bill for more information and listing of classes offered along with the official Rules of Entry and Participation for the Futurity classes. The following walk trot classes have been added, Western Pleasure Walk Trot, Walk Trot Horsemanship and Walk Trot Trail. The show starts at 8:00 a.m.

The show manager is Mel Gahley, 208-286-7050. Please contact the show secretary to pre-register by contacting Nola Krahn, P.O. Box 1321, Kamiah, ID 83536, 208-935-0709 or e-mail at russnola@yahoo.com or to go www.TVPHC.com.

To reserve stalls contact Melinda Birt at 208-466-1820.



**PRE-REGISTRATION IS REQUESTED BY CONTACTING
NOLA KRAHN, SHOW SECRETARY**

Treasure Valley PHC ISHSA Fall Show September 6, 2009



Following the 2009 Autumn Classic, TVPHC will be holding its ISHSA Fall Show at Al Birt Arena in Nampa.

All classes are \$5.00 by pre-registering with Nola Krahn, P.O. Box 1321, Kamiah, ID 83536, 208-935-0709 or e-mail: russnola@yahoo.com.

Show starts at 8:00. There will be special prizes and \$\$\$ cash awards in most class divisions. Specials awards to lead liners. All beginners classes have awards. Gamers win your entry fees back!!! All gaming classes are sponsored. Awards to reiners, open classes & money in most classes.

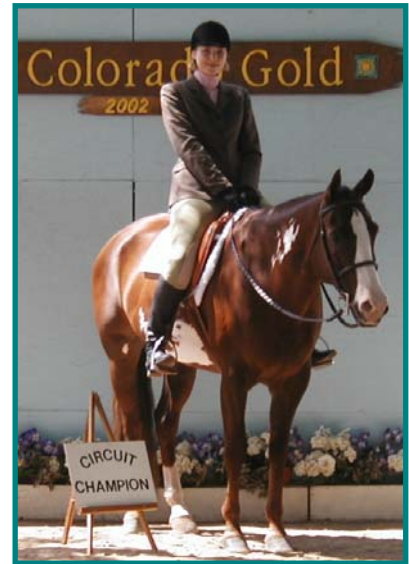
TVPHC would like to thank all of their sponsors for helping fund this show. Please see the enclosed showbill.

Horses For Sale

The following two horses are for sale. If interested please call Jennifer Buxton at 208-403-1203 or e-mail her at jennifer@jenbuxton.com.

Sired by Im Impressed Too and is out of Freeway Desert Rose. Tuffy, a 1992 model, placed 15th in year 2002 Top 20 Novice Amateur APHA all around. Tuffy would make an excellent 4H horse. Tuffy has a quick mind and loves team penning. He works gates and loads and hauls well. He has been trailer hauled extensively to various places, including horse show events in Idaho and Colorado. He is very good about having his feet worked on and is

sound and same. The \$3,500 is negotiable to a good home.



Ivey is a 2000 bay mare. She is deaf. She has navicular syndrome but she can be ridden gently. I'm moving to Florida and cannot afford the high boarding costs. I'm hoping to find a good home where she can be put out to pasture with another horse or other horses to keep her company. The price is open / negotiable since I'm only worried about her welfare and would like to find someone who will care for her.



TVPHC Officers

- President, Anne Phillips-Gahley 208-286-7050 whatshappening3@msn.com
- Vice President, Dick Ramsey 208-278-5430 plppaints@q.com
- Secretary, Cindy Ramsey 208-278-5430 plppaints@q.com
- Treasurer, Mel Gahley 208-286-7050 whatshappening3@msn.com

TVPHC Board Members

- Director, Chad Hargis 208-467-6531 makelkiruth@hotmail.com
- Director, Michelle Hargis 208-467-6531 makelkiruth@hotmail.com
- Director, Ila Sanderson 541-473-3315
- Director, Shawn Charters 208-869-8031 shawn@blackcanyon.us
- Director, John Charters 208-869-8073 shawn@blackcanyon.us
- Director at Large, Nola Krahn 208-935-0709 russnola@yahoo.com

Treasure Valley Paint Horse Association

Membership Application 2009

Membership Fee: Individual \$15.00 _____ Family \$20.00 _____

Special Fee: Active 2008 APHA Membership fee is \$10.00 for individual or family.

Name: _____

Ranch Name: _____

Address: _____

City/State/Zip: _____

Phone: _____ Cell: _____

Email: _____

APHA Number: _____

Family Membership List Members:

- 1. _____ 2. _____
- 3. _____ 4. _____

We need volunteers: Check those you will help with.

- | | | |
|--------------------------|-------------------------|----------------|
| _____ Gate Person | _____ Ring Steward | _____ Announce |
| _____ Set up Jumps/Trail | _____ Donate for Awards | _____ Office |

Mail to: Mel Gahley
 8831 Hanley Place
 Eagle, ID 83616

Phone: 208-286-7050

Email: whatshappening3@msn.com

July 2009

TVPHC Stallion Auction Stallions

2005 The End Zone	2006 Comedy Star	2007 Barlink Gold Rush
2005 Izzy Fine	2006 Copy of a Page	2007 ACS Ultimate Dream
2005 JNG Index	2006 Im Royale	2007 Premenitions Tramp
2005 HES Obviously Smooth	2006 Izzy Fine	2007 Justifiable
2005 Im Royale	2006 WKN Chicas Icon	2007 Comedy Star
2005 DSM IBA Fancy Zippo	2006 Sonnys Biltriteman	2007 Kootenai Wildfire
2005 Woodstock M Zip	2006 Justi Fiasco	2007 Im Royale
2005 I'm Just Awesome	2006 Par Te On	2007 Sonnys Biltriteman
2005 Mr. Gallant Smoke	2006 DSM IBA Fancy Zippo	2008 DSM IBA Fancy Zippo
2005 Sonnys Top Gun	2006 Mckenzie's Gallant Jet	2008 Comedy Star
2005 Mr Tenacity	2006 Star Studded A	2008 Irresistable Bett
2005 Barlink Hazbenturfmacho	2007 Par Te On	2008 Dignified Mister
2005 Encountered	2007 Cowboy Gold	2008 Im Just Awesome
2005 WKN Chicas Icon	2007 Barlink Macho Too	2008 Im Justa Awesome Fox
2005 Sonnys Biltriteman	2007 DSM IBA Fancy Zippo	2008 Sonnys Biltriteman

Treasure Valley Paint Horse Club
8831 Hanley Pl.
Eagle, ID 83616

BULK RATE
US POSTAGE
PAID
CITY, STATE
PERMIT NO. 000

ADDRESS CORRECTION REQUESTED

Subscriber Name
Number Street Address
City, State Postal Code
Country